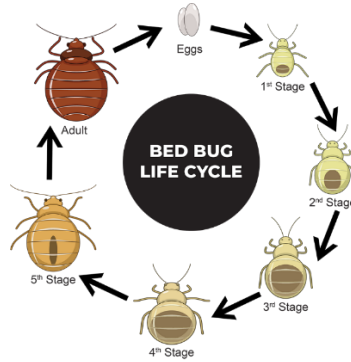


## Tips and Instructions for Bed Bug MACE



### TIPS:

- As treatment begins, bed bugs will scatter and seek new places to hide. Even if you do not visually see bed bugs and believe your problem is resolved, please do not stop spraying. They can still be hiding and producing out of sight.
- We also advise you to use Diatomaceous Earth, and or Cimexa Dust as part of your treatment plan. You can use our products with these powders as part of your cleaning routine. Many people use mattress and box spring encasements. You can also place traps at the base of your bed legs.
- If you have a heavy infestation, or relentless bed bugs you may need to use our product in conjunction with foggers or steamers. If this happens, please increase your application of our product to once a week for three weeks.
- Our Bed Bug MACE can be used for both indoor and outdoor applications and can safely be sprayed on bed sheets, mattresses, box springs, baseboards, window frames, pet bedding, wood, tile, carpeting, suitcases and more!
- Our spray gives off a clean aroma, killing bed bugs while freshening the room! If you find the smell overwhelming ventilate the room for 15 minutes or until the smell dissipates. Be **patient, generous, and persistent with applications!**
- Inspect all areas of the room for evidence of Bed Bugs. Be sure to thoroughly inspect carpet, mattress seams, box springs, bedding, wall cracks, drop down ceilings, appliances, electrical outlets, picture frames, behind switch plates, inside furniture including dresser drawers and hollow furniture legs, spines of books, and pay particular attention to cracks, folds, and edges. Any cracks or crevices should be filled after treatment is successful.
- Thoroughly clean the area and remove all clutter! Strip and wash linens and bedding in hot water. Place clothing from closets and drawers into secure plastic bags and clean. Keep beds away from direct contact with walls. Take all shoes, clothes, toys, books, and any other miscellaneous items and put

them into a plastic bag. Take a cloth and fully saturate it with our product. Throw the cloth into the bag, shake, and let sit for 1-2 weeks.

- Prior to laying product down vacuum, do not use a bagless vacuum! Once thoroughly vacuumed to remove bed bugs take the bag to an area off premises.
- If you are traveling spray the outside of the luggage before your departure. Before returning home spray both the inside and outside of your luggage, let dry, then repack. Ensure you spray all compartments and seams! Spray the seat and trunk crevices in your vehicle as well!
- If your sprayer clogs: Always shake Nature's MACE liquid products for a full 60 seconds prior to using to ensure the ingredients thoroughly mix. To prevent clogging, remove the spray head and rinse after each use. In a case where the nozzle clogs, submerge the bottle under warm water for 15 minutes, or hold the spray nozzle head under warm running water for 5 minutes until the sprayer resumes normal function.  
If it still does not work, try removing the filter located at the bottom of the spray nozzle. If after doing this your product still is not spraying, please contact us as you may have a defective nozzle, or it may still be clogged. We will happily send you a replacement and apologize for any inconvenience it causes.

### **Bed Bug MACE Ready-to-Use Spray:**

1. Spray directly onto bed bug infested area until wet but not soaking. Repeat every 7-14 days or as needed for eradication and prevention.
2. More than a single application is typically required. **Be patient, generous, and persistent with applications!**
3. Our product should not stain or leave any type of film on the areas being sprayed. As a precaution we always suggest doing a patch test on fabrics or materials to ensure product compatibility!

**Thank you for choosing**

**Nature's MACE**  
Proven Effective Animal Repellents